

IPAT Newsletter # 4, Fall 2023

2024 EXPO IPAT Museum Convention FOUR DAY PRE-CONVENTION SCHOOL

We are proud to have especially invited six internationally famous teachers for this special event. The dates will be:

Arrive DFW or Grapevine, TX
Saturday, September 29

School runs:
Sunday, September 29 (1 pm—5 pm)
Monday, September 30 (9 am—5 pm)
Tuesday, October 1 (9 am—5 pm)
Wednesday, October 2 (9 am—12 noon)

This schedule allows two full days and two half days at US\$385. Participants will arrange their own meals in the food court downstairs or in nearby restaurants and purchase the porcelain from the Convention dealer.

IPAT Convention Schedule opens on Wednesday, October 2 afternoon, October 3, 4 all day Convention with demonstrations on the show room floor, Convention closes at noon on October 5.

Nancy Benedetti of USA



**Hand Built
Underwater Scene**

Birgit Porter of USA



**Portrait of
Student's Choice**

Paola Bari of USA



**Choice of
anemones or
moth portrait**

San Do of USA



**Portrait of
young girl**

Etsuko Hanajima of Japan



**Floral plate
with choice
of color band**

Filipe Pereira of Portugal



**Student
choice of
project**

Meet Mary Belle Cordell

Mary Belle Cordell is a porcelain artist who moved to Marietta, Georgia, from Fort Lauderdale, Florida several years ago. While living in Florida, Mary Belle was very active in many facets of the art scene. She was on the staff of The Boca Museum Art School and also The Bonnet House Museum and Gardens. She taught china painting, reverse glass painting, and encaustic wax painting. Her first love is the fine art of painting on porcelain. Before moving to Marietta, Georgia she received a call from the Gem Shopping Network in Duluth, Georgia.

This was an opportunity of a lifetime and her work which included porcelain pendants, plates, and framed artwork was presented on Comcast TV all over the country.

She began her love of ceramics and painting on slick services by making pottery and painting floral designs on them. Her hand-painted pottery was sold in upscale gift stores along the East Coast and also through House and Gardens magazine.

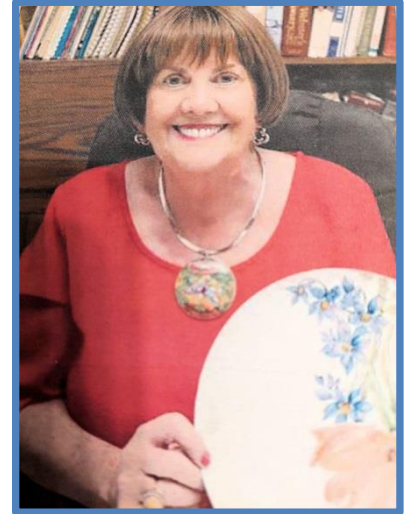
Mary Belle found that china painting was her first love. Her twenty, ten-inch plate, Eighteenth Century Floral designed installation was presented at ArtServe Gallery, in Fort Lauderdale. At that time she was recognized as one of the rising artists in Broward Co., Florida.

That installation was also presented in the Metro Montage XXI show at the Marietta Cobb County Museum of Art in Marietta, Georgia.

Mary Belle is active in her church and several other organizations including the National League of American Pen Women. This organization consists of professional Writers, Artists, and Musicians. She is the past president of that organization and was also Women of the Year of the Fort

Lauderdale branch.

Recently Mary Belle became the president of the Georgia World Organization of China Painters. As president of this organization, she worked with Councilman John Reidelbach of Coweta County, Senator Matt Brass, and Representative Lynn Smith to have May 18th, 2023 designated as Georgia World Organization of China Painter's Day in the State of Georgia. In the coming year, Mary Belle will continue to promote China Painting as a fine art and fill her studio with as much hand-painted porcelain as she can.



LARGE four paneled porcelain vase painted with metallic dust, 14K gold and fused glass and some porcelain chips. The butterflies are painted with colored enamel and 14 K gold. The dividing strips are painted with enamel and 14 K gold. Four sides are painted with botanical pictures.

Caroling Snowmen by Alice Wofford



COLOURS USED: Sevres green, Slate Gray, Turquoise, New Leaf Green, Black Green, Violet, Yellow Red, Yellow Brown, Blood Red, Black, Chocolate Brown, Clear Rose Enamel and Liquid Bright Gold.

FIRST FIRE:

- Paint Slate Gray for the shadows on the snow people, keep lots of highlights and blend in a rounded stroke to keep from having a flat look.
- Paint all red areas with Yellow Red as the base color, shade with Blood Red.
- The gentleman's hat has Turquoise for the base and Black Blue for shadows. Paint Clear Rose on the band and a bit darker for the shadow area.
- Paint the green hat, holly and book with New Leaf Green, shade with Sevres Green.
- Mixed Yellow Red and Yellow Brown for the carrot, apply Yellow Brown for the hair, Chocolate Brown for the little branch, and Slate Gray for mouths. Fire cone .016.

SECOND FIRE: Sand and Clean

- Add a little bit of violet to the Slate Gray to give the shadows on the people a bit more depth. Make it a bit darker in the areas that are on the snowman since he is behind the ladies and has more shadows, and the darkest shadow areas on each lady.
- Add Blood Red on all the red items and a little Chocolate Brown in the shadows.
- The gentleman's hat is Black with Turquoise in the highlight.
- Add a little Violet for the shadow on the pink band.
- Shade the holly and green hat with Black Green. Add Sevres to the book. Add the treble cleft in black.
- Shade the darkest area of the mouths with Slate Gray. Paint Black on the buttons. Use the same mix for the carrot and more Yellow Brown on the shadow side of the hair. Fire cone .016.

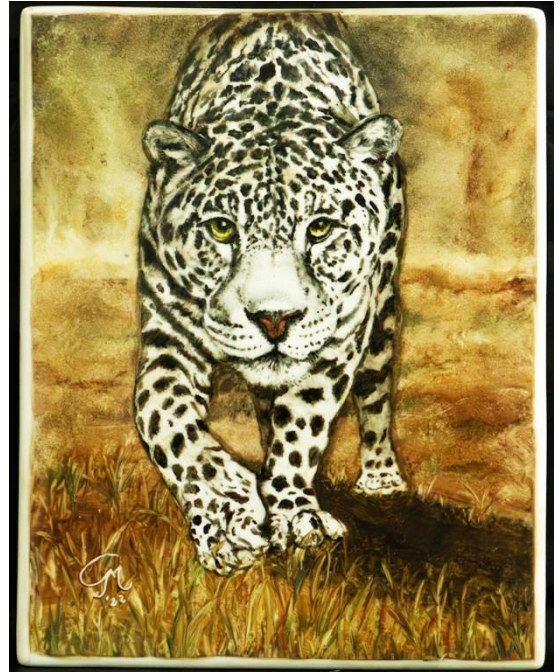
THIRD FIRE: Sand and clean.

- Cover design with resist and allow to dry. Mix Slate Gray and Turquoise with a touch of Violet, apply heavily to the background and pounced to smooth. Fire cone .016.

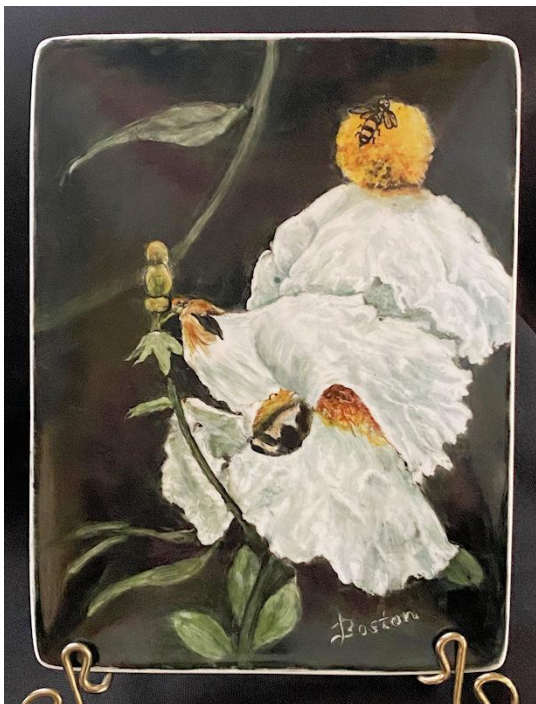
FOURTH FIRE:

- Apply Liquid Bright Gold to the rim and let it dry. After the gold is dry, apply the "snow flakes" with enamel, base for gold to the background and the snowmen. Fire cone .017

Thank you Georgian Margan for showing your two animal paintings below.



Pat Boston from Arizona shares some of her work



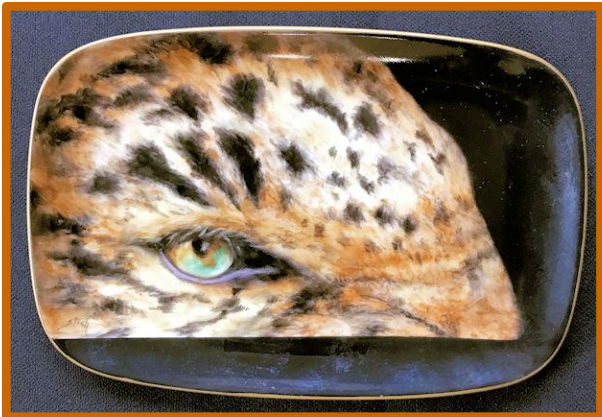
Pat Boston continued...



Sandra Stich's work. She lives in Kentucky.



Sandra Stich continued...



For updates on the 2024 Convention, including when registration opens for the classes at the start of the newsletter, check out <https://www.ipatinc.org/convention-2024> or *IPAT Convention* on Facebook

As always, any addition to the IPAT newsletter can be directed to myself at the following email address. Should you have any of your work you wish to share also send it to this address.
Esp_ga@bellsouth.net