

IPAT International Newsletter
Summer 2021

**ANNOUNCING THE
2021 IPAT MAGAZINE CONTESTS
BE A WINNER AND BE PUBLISHED
IN OUR NEXT MAGAZINE!**

2021—4th Issue (Oct-Dec) **LUSTERING IT UP**

DEADLINE Aug. 10, 2021

Using Lusters—This art must incorporate lusters

2022—1st Issue (Jan-Mar) **MY FAV**

We want your very favorite piece you have painted

DEADLINE: Nov. 10, 2021

2022—2nd Issue (April-June) **GOLD FINGER**

Using Gold or other metal techniques (Feb 10,22)

2022—3rd Issue (July—Sept) **FLOWERS GALORE**

Any flower you choose for this issue! (May 10,22)

2022– 4th Issue (Oct-Dec) **HOLIDAY ORNAMENTS**

SEND YOUR PHOTO TO to ipat2018@att.net

**To enter, the art must be original and you must be an
IPAT member. We will try to get as many in as possible**

New facility – Virtual Magazine

Local and international postal delivery has been greatly affected by the outbreak of COVID-19. Due to the cancellation of international flights, members in many countries suffered delay or non-delivery of the Porcelain Artist. As we do not see instant improvement in international postal service, IPAT introduced “**Virtual Magazine**” in the Magazine page of IPAT’s website for Non-USA members.

- ✚ **International members** wishing to switch to receive Virtual Magazine, please email the Office Manager at ipattx@yahoo.com giving your membership number. There is no refund on membership fee for 2021 but from your renewal for 2022 onwards, your membership fee will be reduced to US\$36 per year.
- ✚ **New members** joining IPAT at any time of the year pay US\$36 Membership Fee to enjoy the full year’s magazines in the website.

The new Membership Form in “Join Us” page of IPAT’s website includes this choice of facility [Membership | IPAT, Inc. \(ipatinc.org\)](#) You can now use the more convenient Online Membership Form.

**YOU ARE
INVITED!**

**HOLIDAZE
ON FRANKLIN ST.**



WHERE: THE IPAT MUSEUM on Franklin Street during the Grapevine, Texas Christmas Festival.

WHEN: Two weekends in December of 2021 during the Grapevine Christmas Festival. Dates TBD.

ARTISTS BENEFIT: The artists can receive either 60% of the sales proceeds if their amount is over \$20.00 or they can donate 100% to IPAT.

BOOTHS: They can also be rented by the artists at \$50.00 per weekend. The table space is limited. IPAT will schedule many festive events during this time.

IPAT will hold its second festival, Holidaze on Franklin Street, at the newly renovated IPAT museum in conjunction with the Grapevine, Texas Christmas Festival during the first two weekends of December, 2021 where past attendance has reached as many as 20,000 visitors daily. Visitors will have the opportunity to purchase various art forms including porcelain, glass, metal, wood and others. Demonstrations will also be held. We encourage the art to be holiday related, but it is not a requirement. Proceeds from the sales will benefit the artists and IPAT.

Please donate by sending your painted Christmas ornaments to IPAT to help raise money from Holidaze. Event Volunteers are also needed. This will be a great way to get in the holiday spirit. So get ready to start painting. For more information, contact the IPAT at ipattx@yahoo.com. See you there!

Leather Look on China

Clara Menefree from Elwood, Indiana



FIRST FIRE: Using a light colored Matt paint (Yellow-Brown), paint china rather heavily. Doesn't need to be real smooth. Fire 018, sand lightly.

SECOND FIRE: Put on design. Mix Dark Brown Matt paint for pen work. Use fine point for the outside design pen work (on leather this would be cut with a knife) Do the line work inside design. Fire 018.



THIRD FIRE; Paint and cover all the negative area of design pretty heavy and rather evenly with medium shade of Matt Brown. Let set. Prepare blotter for texture. (Saran wrap). Pounce continually turning piece so marks are in a different position each time you pounce down. Clean out the designed area. You may do the shading in the pen work now or on another fire. Shade around edges of pen work for authentic leather look. Fire at 019. Use same color in your background then use it in the shading. HAVE FUN!!!

Other paintings by Clara.....

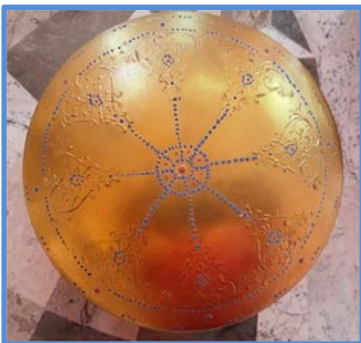


Presentation on Porcelain Art at the Kemp Art Center in Wichita Falls, Texas by Cynthia Pinnell



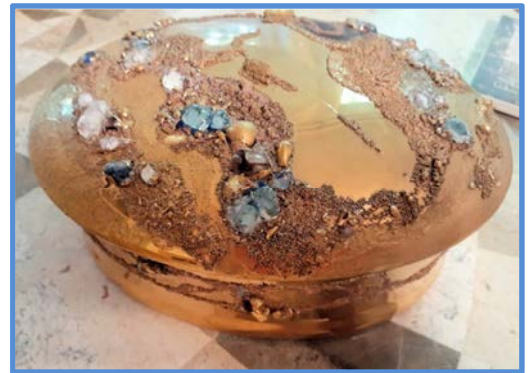
BASE FOR GOLD AND ENAMELS WILL ADD BEAUTY TO YOUR WORK By Mary Belle Cordell

Decorating with base for gold, enamels mixed with tin oxide, and some special formulas that are made by teachers are used to decorate our chinaware.



When I use the dry base for gold powder I mix it with mineral oil. I keep grinding it until it can be scrolled. You may use china paint to tint the base for gold. A test firing is suggested if you require a specific color or shade. Base for gold will not flake off and can be used to attach glass beads and additions to your work. I sometimes add

Fine sand to the enamel to add interest.



The round gold box was painted with enamel mixed with a special formula that required several different powders and tin oxide. The box was painted with liquid bright gold and fired and then painted with Roman Gold and fired again. I then added the colored enamels on the last firing.

The oval box was painted with midnight blue lusters, base for gold with sand added and fused glass. The glass pieces are attached with the base for gold. The bottom of the box was etched with water base acid etching. Liquid bright gold was applied over the top and bottom of the box.

Base for gold may be applied with a pallet knife. I sketch the scene on the tile with drying pen oil. I then mix the dry base for gold with china paint. I mix enough to complete the whole painting. I mix the dry powder with mineral oil and fire the tile flat in the kiln. I have used this technique on large sea scenes and on some porcelain discs that can be used for jewelry.

Make everything easy. Use what works best for you. Try new things and make your work special. Take as many classes as you can and then apply that knowledge to your own art.



Christmas in July by Vera Ables Gandy

Most of us Porcelain or China Painters start with our orders or items to sell in July so that we are ready and not over worked in December.

For me, that is the best time to begin. I sell Christmas Balls to my clients every year and have repeat orders each year. I enjoy the excitement and pleasure in doing these Luster Balls. With the Lusters and the heat you never know what you will get when you open the kiln, even using the same colors and chemicals; it is just like Christmas morning.

When asked to share with you my art, I tried to think of something unique to share and then I decided to share some of my Christmas Balls. It is a one stop deal, the Porcelain Lustered Balls, Gift wrapped

with a card.

As you will find out painting with lusters, everyone has the BEST technique and "you cannot do this and you cannot do that". With most instructions and teachers, you will learn from all, so take what you have learned and create your own style. Practice makes perfect!

Clean your china with fingernail polish remover (non-acetone)

Use a light and a dark luster, never two lights or two darks

Use a clean dropper for each color. (Can buy plastic mini droppers at Hobby Lobby). Mark your dropper with red pen so as to get the same amounts of solutions to mix together since there is no graduated size on dropper.

Use as a Essence dispersing agent, Nancy Bergman's, or Hanovia's or Acetone from the Hardware Store Using two clean bottles, place the luster (1/2 dropper) in the bottle, one color per bottle and then add (1/2 dropper) of Essence dispersing agent.

Place you porcelain ball onto a ball stand so that your ball will be free of your hands after the solution has

been added to the porcelain. Using a small saucer to place under the ball



stand to catch the solution.

Next step, using the dropper with the solution, add to you ball the first bottle, then wait a few seconds and add the second bottle to the ball. Let dry and then fire at 0.17.



Virginia (Ginny) Herrman Sheboygan Falls, WI
Interviewed By Anna Marie Skonieczny

World of Unlimited Joy

Ginny's love for china painting began one Sunday before Christmas at a local Mall Craft Fair, where she saw a table filled with beautiful hand painted china. Behind the table was Hilda Meyer, a local china painting teacher. Ginny painted with Hilda for almost 10 years until Hilda found out she had cancer. Hilda asked Ginny to take over her class. Ginny taught three classes a week and expanded with a class of six young ladies that were being home schooled and looking for an art class. The girls were ages nine to thirteen when they started and most stayed with Ginny until they went to college. Ginny hopes that someday they will seek out a china painting teacher.



When Ginny began teaching she also started taking seminars under professional teachers from all over the country. She met Celeste McCall, and Ginny found her love of portrait painting which expanded her love for the art. Ginny feels that the joy of creating pictures on China brings with it a chance to step out of the everyday world and into a world of unlimited joy. The names are - in gray is Blake Kellner and Clayton Kellner in the red. These two are my great grandsons.



Article and the photos by Dr. Corinna Siu

corinnasiu@hotmail.com.hk

Tsai Hsiu-mei of Taiwan

China painting teacher and decorative painter, IPAT Certified Artist and Teacher will be missed by all. Our sympathy to her family.

Tsai Hsiu-mei 蔡秀美 (Mei) started teaching porcelain painting in 2004 when her teacher Yoko Morhy, a Japanese expatriate living in Taiwan, decided to return to Japan. Since 2002, Mei's group organized porcelain art exhibitions in Taiwan in even years. During the odd years, Mei arranged smaller display events to keep up the porcelain art spirit like displaying artworks in an art shop connected with a coffee shop to compliment the relax environment. Mei is IPAT's Certified Artist and Teacher. Besides teaching porcelain painting, she is also a teacher in Decorative painting and Flower arrangement.



Porcelain paintings



Belle Tsai Ho-chung An 蔡賀仲安, Mei's daughter, has certainly inherited a fond of art from her mother and has been painting in different medium since childhood. Mei realized the importance of giving Belle the freedom to think in order to develop her creative independence. Mei is pleased to see Belle applies innovation to her porcelain paintings. Belle is a Master student in Product Design of Ming Chuan University in Taiwan.





Look at these nail brushes. They are very good and they have stylus on one end. I have been using them for some time and they are sturdy and hold their points. You will need to look for them on the internet.



We would like to publish your work in this Newsletter. Please send an article to your area representative or to me at esp_ga@bellsouth.net. If you enjoy the articles shared by fellow painters in this format, send us an article of what you painted or something about your group.

Send all photos in 300 DPI and separately not imbedded in a PDF format. Using a Word document for your article and your photos is probably the easiest. I will edit all of the photos. Next deadline is October 1 for the Fall Newsletter.